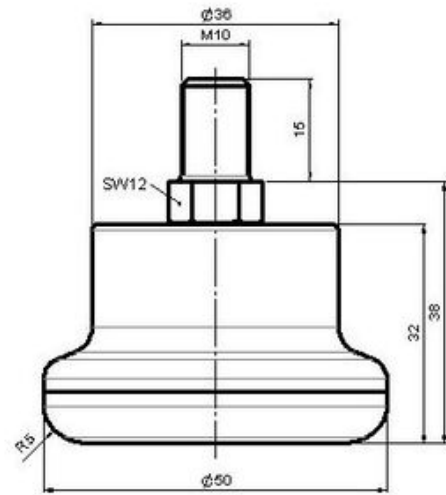


STATO F031

As of: May 23, 2026

Description F 31 BG 1X10	Model F031	Carton Quantity 300 pcs per Carton
-----------------------------	---------------	---------------------------------------



## Technical Details

Product Type	Glide
Glide bottom diameter	50mm
Load capacity	75kg
Overall height with fixing	38mm
<b>Housing:</b>	
Bottom	standard
Upper glide material	High quality plastic
Upper glide color	RAL 9005 Jet black
Lower glide material	High quality plastic
Lower glide color	RAL 9005 Jet black
Fixing	Standard, M10x15mm Threaded stem, without circlip
Description	F 31 BG 1X10

## Fixings

Compatible with the following available fixings:

### No-Noise™ Stem:

- 11x19.5mm with 11.4mm circlip
- 11x19.5mm with 11.6mm circlip

### Push fit stems:

- 10x22mm with 10.3mm circlip
- 10x22mm with 10.5mm circlip
- 11x19.5mm with 11.4mm circlip
- 11x19.5mm with 11.8mm circlip
- 11x22mm with 11.4mm circlip
- 11x22mm with 11.6mm circlip
- 11x22mm with 11.8mm circlip
- 11x22mm with 11.8 banded K290 4A
- 11x26mm

### Threaded stems:

- M8x15mm
- M8x20mm
- M8x25mm
- M10x15mm
- M10x20mm
- M10x25mm
- M10x30mm
- M10x40mm
- M12x20mm
- 5/16-18x1"
- 5/16-18x1/2"
- 3/8-16x1"
- 5/16-18x5/8"
- 3/8-16x1/2"
- 3/8-16x5/8"

### Square plates:

- 38x38mm
- 55x55mm
- 60x60mm