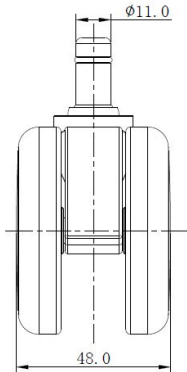
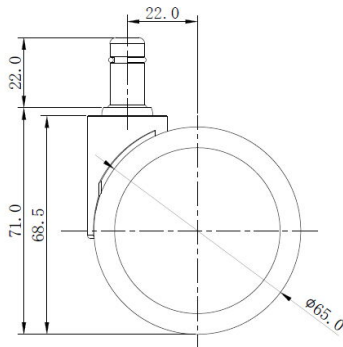


Traditional 65 classic

As of: August 20, 2025

<b>Description</b> TDK72-5X2B	<b>Model</b> T72	<b>Carton Quantity</b> 100 pc per carton
----------------------------------	---------------------	---



Technical Details

Product Type	Furniture or Chair Caster
Wheel diameter	65mm   2.56"
Load capacity	61kg   134 lbs.
Overall height with fixing	68.5mm
<b>Wheel:</b>	
Wheel type	hardwheel
Wheel color	Black
<b>Housing:</b>	
Housing form	unhooded
Neck diameter	25mm
Housing material	High quality nylon
Housing color	Black
Mobility concept	Freewheel
Fixing	11x22mm Push-fit stem
Description	TDK72-5X2B

## Fixings

Compatible with the following available fixings:

### Push fit stems:

- 10x20mm with 10.3mm circlip
- 10x22mm with 10.5mm circlip
- 11x19.5mm with 11.8mm circlip
- 11x22mm with 11.4mm circlip
- 11x22mm with 11.6mm circlip
- 11x22mm with 11.8mm circlip
- 11x22mm with 11.8 banded K290 4A
- 11x26mm

### Threaded stems:

- 3/8-16x1"
- 3/8x1"

### Square plates:

- 38x38mm
- 55x55mm
- 60x60mm