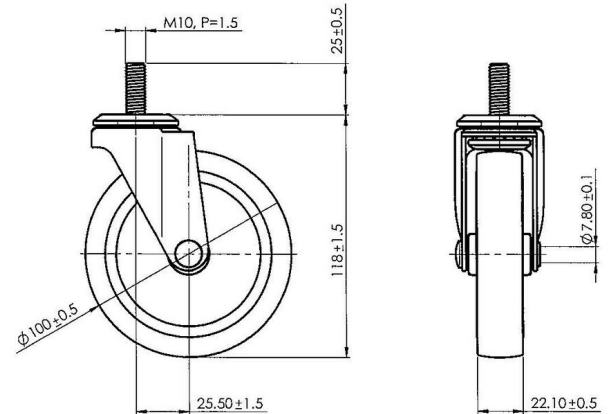


Description	Model	Carton Quantity
SW100-2XM10X25	SW100	100 pc per carton



Technical Details

Product Type	Furniture caster
Wheel diameter	100mm 4"
Load capacity	45kg 99 lbs.
Overall height with fixing	119mm
Wheel:	
Wheel type	hardwheel
Wheel color	Black
Housing:	
Housing form	unhooded
Housing material	Galvanized steel
Housing color	Chrome
Mobility concept	Freewheel
Fixing	M10X25mm Threaded stem
Description	SW100-2XM10X25

Fixings

Compatible with the following available fixings:

Push fit stems:

- 10x20mm with 10.3mm circlip
- 10x22mm with 10.5mm circlip
- 11x19.5mm with 11.8mm circlip
- 11x22mm with 11.4mm circlip
- 11x22mm with 11.6mm circlip
- 11x22mm with 11.8mm circlip
- 11x22mm with 11.8 banded K290 4A
- 11x26mm

Threaded stems:

- 3/8-16x1"
- 3/8x1"

Square plates:

- 38x38mm
- 55x55mm
- 60x60mm