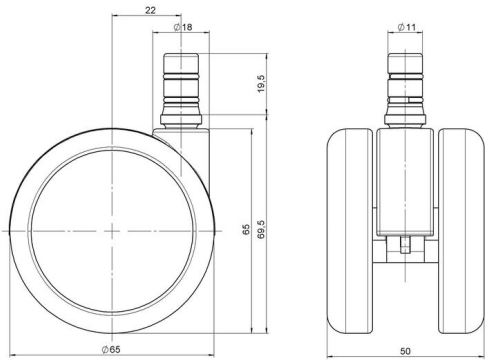


Standard D065

As of: February 15, 2026

|                                       |                      |  |
|---------------------------------------|----------------------|--|
| <b>Description</b><br>DUZB 65 - 2X2NN | <b>Model</b><br>D065 | <b>Carton Quantity</b><br>100 pcs per Carton |
|---------------------------------------|----------------------|--|



Technical Details

|                            |  |
|----------------------------|--|
| Product Type               | Furniture caster   |
| Wheel diameter             | 65mm   2.56"   |
| Load capacity              | 65kg   143 lbs.  |
| Overall height with fixing | 69,5mm   |
| <b>Wheel:</b>              |  |
| Wheel type                 | Soft wheel   |
| Wheel core / tread color   | RAL 9005 Jet black / RAL 7022 Umbra grey                             |
| <b>Housing:</b>            |  |
| Housing form               | unhooded, with neck diameter   |
| Neck diameter              | 18mm   |
| Housing material           | Zinc die-cast  |
| Housing color              | Shiny chrome   |
| Mobility concept           | Freewheel  |
| Fixing                     | No-Noise™ Stem, 11x19,5mm Push fit stem with double circlips, 11,4mm |
| Description                | DUZB 65 - 2X2NN  |

## Fixings

Compatible with the following available fixings:

### No-Noise™ Stem:

- 11x19.5mm with 11.4mm circlip
- 11x19.5mm with 11.6mm circlip

### Push fit stems:

- 10x22mm with 10.3mm circlip
- 10x22mm with 10.5mm circlip
- 11x19.5mm with 11.4mm circlip
- 11x19.5mm with 11.8mm circlip
- 11x22mm with 11.4mm circlip
- 11x22mm with 11.6mm circlip
- 11x22mm with 11.8mm circlip
- 11x22mm with 11.8 banded K290 4A
- 11x26mm

### Threaded stems:

- M8x15mm
- M8x20mm
- M8x25mm
- M10x15mm
- M10x20mm
- M10x25mm
- M10x30mm
- M10x40mm
- M12x20mm
- 5/16-18x1"
- 5/16-18x1/2"
- 3/8-16x1"
- 5/16-18x5/8"
- 3/8-16x1/2"
- 3/8-16x5/8"

### Square plates:

- 38x38mm
- 55x55mm
- 60x60mm