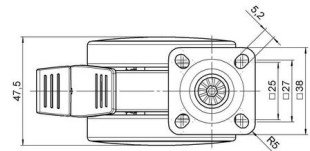
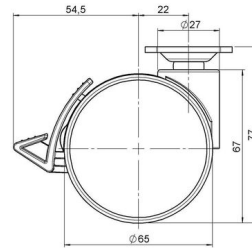


Standard D066

As of: July 07, 2026

| Description     | Model | Carton Quantity    |
|-----------------|-------|--------------------|
| DUKF 66 -27 X 1 | D066  | 150 pcs per Carton |



## Technical Details

|                            |   |
|----------------------------|---|
| Product Type               | Furniture caster                              |
| Wheel diameter             | 65mm   2.56"                                  |
| Load capacity              | 65kg   143 lbs.                               |
| Overall height with fixing | 77mm  |
| <b>Wheel:</b>              |   |
| Wheel type                 | Soft wheel                                    |
| Wheel core / tread color   | RAL 9006 White aluminium / RAL 9005 Jet black |
| <b>Housing:</b>            |   |
| Housing form               | unhooded, with neck diameter                  |
| Neck diameter              | 27mm  |
| Housing material           | High quality nylon                            |
| Housing color              | RAL 9006 White aluminium                      |
| Mobility concept           | Delta-Feststeller, RAL 9005 Jet black         |
| Fixing                     | 38x38mm Plate                                 |
| Description                | DUKF 66 -27 X 1                               |

## Fixings

Compatible with the following available fixings:

### No-Noise™ Stem:

- 11x19.5mm with 11.4mm circlip
- 11x19.5mm with 11.6mm circlip

### Push fit stems:

- 10x22mm with 10.3mm circlip
- 10x22mm with 10.5mm circlip
- 11x19.5mm with 11.4mm circlip
- 11x19.5mm with 11.8mm circlip
- 11x22mm with 11.4mm circlip
- 11x22mm with 11.6mm circlip
- 11x22mm with 11.8mm circlip
- 11x22mm with 11.8 banded K290 4A
- 11x26mm

### Threaded stems:

- M8x15mm
- M8x20mm
- M8x25mm
- M10x15mm
- M10x20mm
- M10x25mm
- M10x30mm
- M10x40mm
- M12x20mm
- 5/16-18x1"
- 5/16-18x1/2"
- 3/8-16x1"
- 5/16-18x5/8"
- 3/8-16x1/2"
- 3/8-16x5/8"

### Square plates:

- 38x38mm
- 55x55mm
- 60x60mm